

DANPAL® LIGHT ARCHITECTURE SOLUTIONS FOR BUILDING ENVELOPES



www.danpal.com



TAKE THE LEAP INTO LIGHT ARCHITECTURE



| CONTENTS

| DANPAL

- Light Architecture concept
- Who are we?
- Thermal & Solar Planning Systems

| FACADE SOLUTIONS

- Controlite System for Facade
- Danpatherm
- Danpal Facade System

| CLADDING SOLUTIONS

- Danpal VRS System

| SKYLIGHT SOLUTIONS

- Controlite System for Roof
- Danpalon Roofing System
- Compact

| OUTDOOR SOLUTIONS

- Danpal Roofing System
- Danpal Compact System

| SHADING SOLUTIONS

- Danpal Louver System

| FINISHING

- Softlight
- HP
- Pearl Low E

| DANPALON® GLAZING MATERIAL

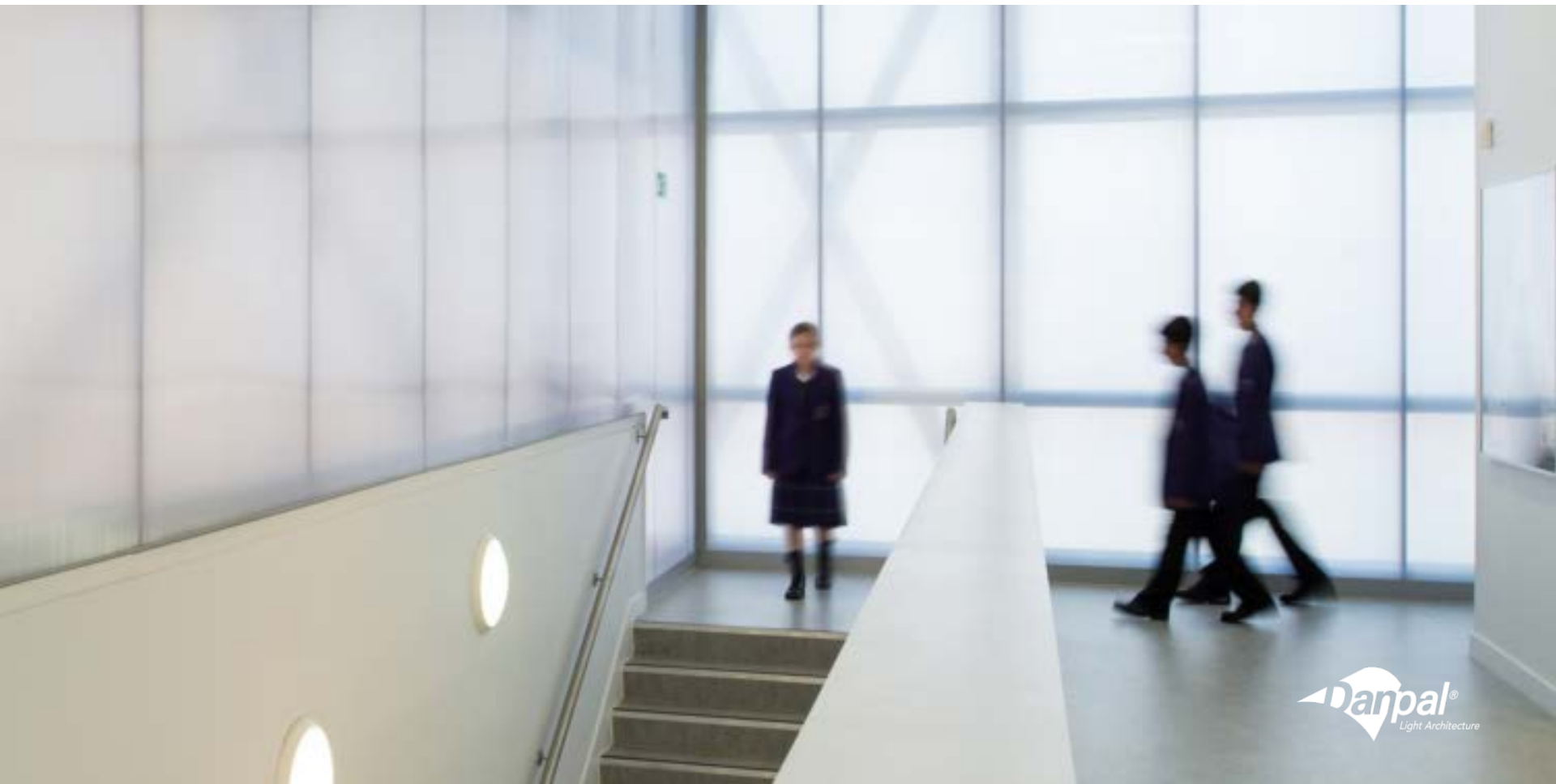
- Danpalon Panel
- Danpalon 3DLITE

| INTERIOR SOLUTION

- Danpal Interior System

BRING YOUR NEXT DESIGN TO LIGHT

MUCH LIKE AIR AND WATER, LIGHT IS ESSENTIAL TO LIFE AND ARCHITECTURE ALIKE



THE ARCHITECTURE OF LIGHT

WHEN YOU CHOOSE DANPAL, YOU CHOOSE LIGHT-TRANSMITTING ARCHITECTURAL PANELING SYSTEMS WITH UNMATCHED DIVERSITY AND CREATIVE POTENTIAL.

WE CALL IT LIGHT ARCHITECTURE.



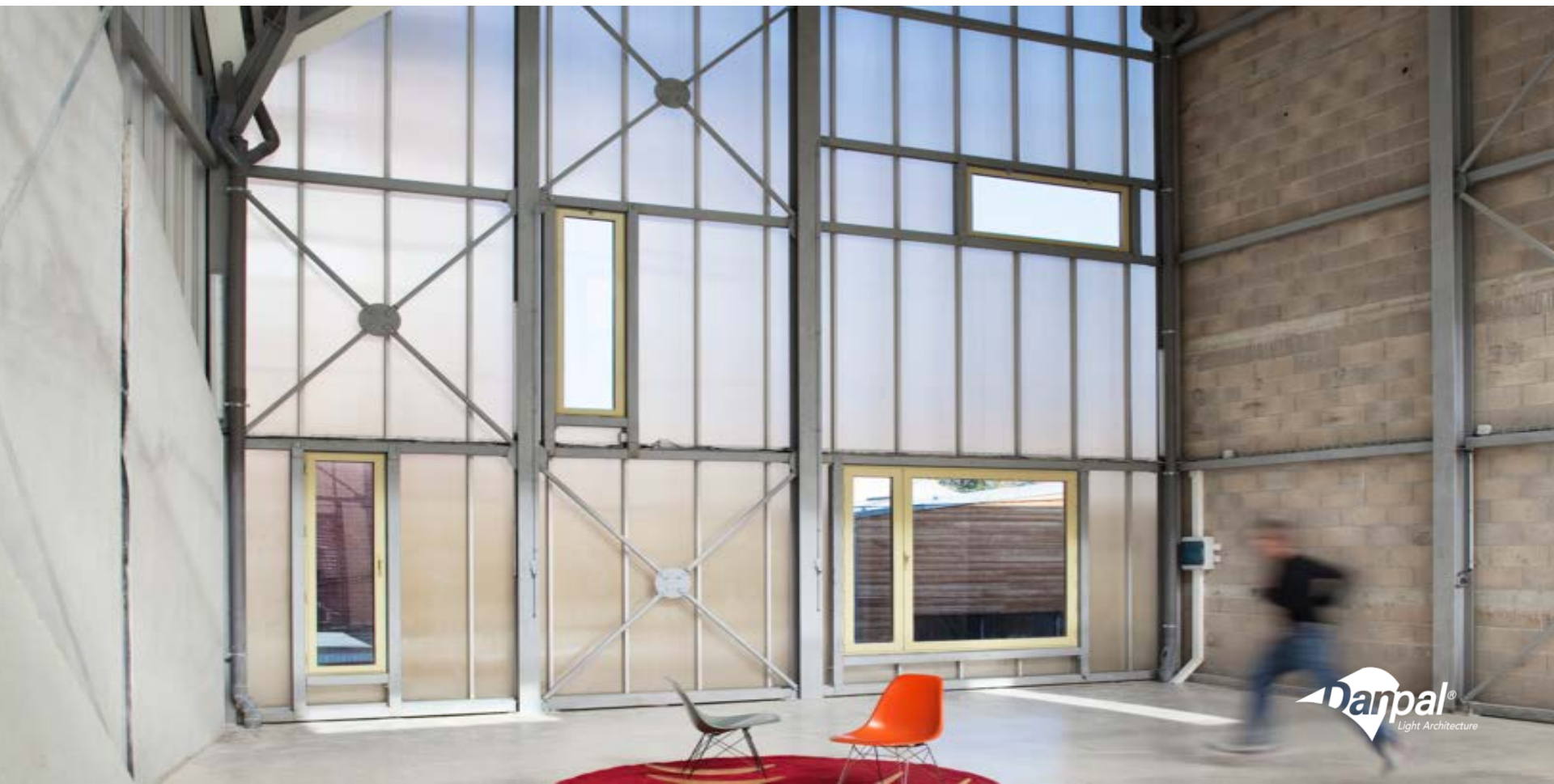
DANPAL SYSTEMS

TURN ANY ARCHITECTURAL STRUCTURE INTO A WORK OF ART



DANPAL SYSTEMS

PROVIDE THE OPTIMAL BALANCE OF SOLAR AND THERMAL PERFORMANCE



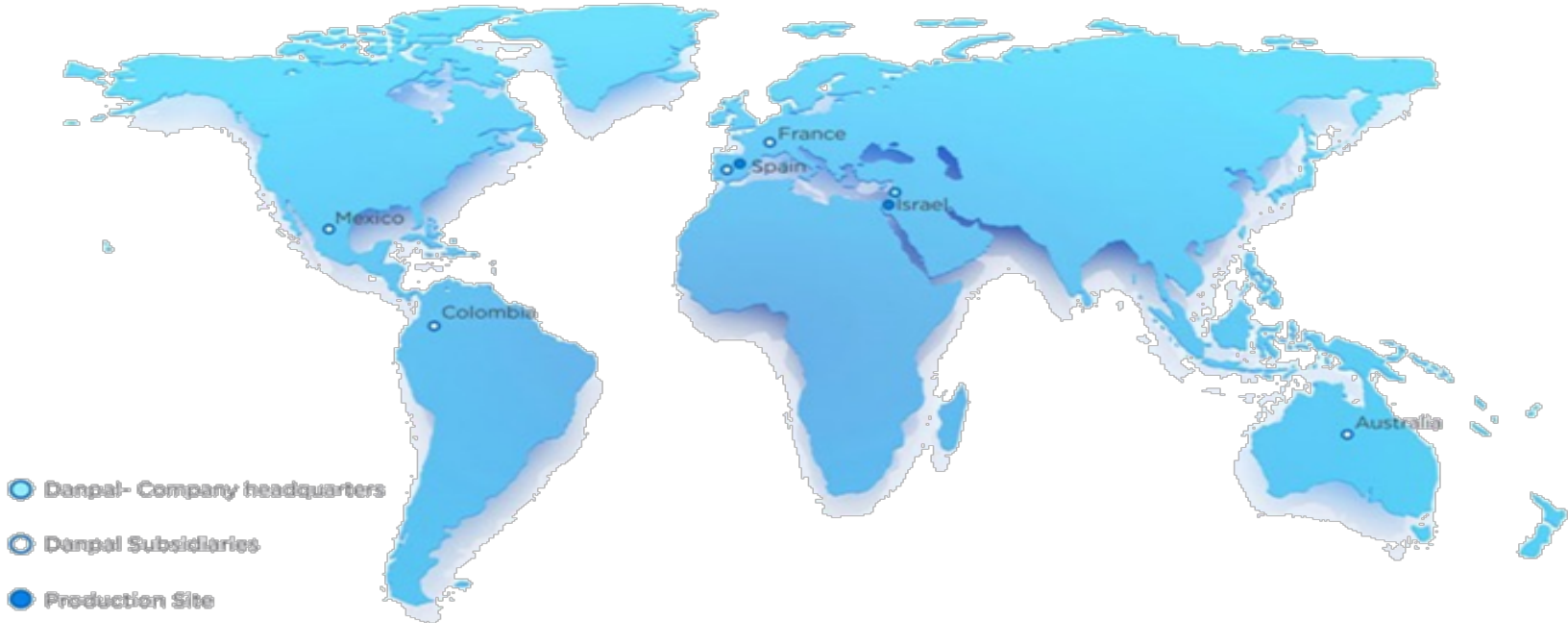
WE BRING 50 YEARS OF LIGHT ARCHITECTURE INNOVATION

EVERY GREAT CRAFTSMAN NEEDS GREAT MATERIALS.

EVERY DANPAL SOLUTION COMES WITH HALF A CENTURY OF EXPERIENCE, HELPING ENSURE YOU CAN CREATE YOUR NEXT MASTERPIECE FROM DESIGN TO IMPLEMENTATION



GLOBAL VISION, LOCAL FOCUS



ISRAEL	CROATIA	COLOMBIA	URUGUAY	INDONESIA	SERBIA
AUSTRALIA	SLOVENIA	ECUADOR	CHILE	KAZAKHSTAN	SRI LANKA
NEW ZEALAND	FINLAND	VENEZUELA	CHINA	KENYA	TAIWAN
FRANCE	UNITED KINGDOM	MEXICO	CYPRUS	SOUTH KOREA	THAILAND
BELGIUM	SWEDEN	COSTA RICA	CZECH REPUBLIC	MAURITIUS	UKRAINE
NETHERLANDS	MOROCCO	GUATAMALA	DOMINICAN	NIGERIA	USA
LUXEMBOURG	ALGERIA	NICARAGUA	ETHIOPIA	PERU	CANADA
ROMANIA	NEW CALEDONIA	HONDURAS	GREECE	PHILIPPINES	VIETNAM
SWITZERLAND	SPAIN	EL SALVADOR	HUNGARY	POLAND	SOUTH AFRICA
AUSTRIA	SPAIN	ARGENTINA	INDIA	RUSSIA	



| WHO ARE WE?

- **Danpal** was established in 1966
- **Danpalon** was launched in 1983
- **Danpal** manufacture and design translucent polycarbonate systems with high thermal insulation, strong mechanical and light properties.
- **Danpal's** approach and strategy has always been to work very closely with architects, from the very first steps of the projects until installation on site.
- **Global operation in 50 countries** by subsidiaries and a distribution chain. Production site in Israel and Spain.
- **Market leader** in its field with **over than 10 million m² installed**

OUR SERVICE

CREATE A NEW COMFORT ZONE WITH DANPAL



THERMAL & SOLAR PLANNING



A 3D architectural rendering of a building facade. The building is shown in a perspective view, with a lighting map overlaid on the windows and facade. The lighting map uses a color gradient from blue (low light) to red (high light). To the left of the building is a vertical lighting map showing a color gradient. To the right are two charts: a bar chart showing building annual energy balance divided by month, and a line graph showing solar flux radiation over time. A legend for the energy balance chart includes: Cooling (blue), Heating (red), and Net (green). The solar flux radiation chart shows a sinusoidal wave pattern. Below the 3D rendering is a detailed cross-section of a skylight assembly, showing multiple layers of glass and insulation.

Lighting map in the first floor (during 22th Sep. 2 PM)

Building annual energy balance, divided by month

THE RESULT

Three types of reports:

- The energy balance
- The light balance
- The solar balance

REPORTS (PDF)

- Energy balance
- Light map



WE ARE SUSTAINABLE

We believe in maximum comfort through the use of natural light

- Enhances the visual qualities of a space.
- Improves mood and increases productivity.
- Maximum use of natural light, preventing glare.

We believe in energy efficiency

- Reduces the need for artificial lighting.
- Reduces air conditioning and heating costs.

We believe in sustainable design

- Reduces emissions of greenhouse gases by limiting energy use.
- Integrates in the design of energy efficient buildings.
- Provides the designers the chance to earn points in ecological construction classification systems (LEED Leadership in Energy and Environmental Design).
- Danpalon has implemented and maintains an environmental management system which complies with the requirements of the ISO 14001:2004 norm (expiry 12.07.18).



DANPAL OFFER 6 APPLICATIONS – COVERING EVERY ASPECT OF THE BUILDING ENVELOPE



FACADES

Controlite System for Facade



Danpatherm System



Danpal Façade System



CLADDING

Danpal VRS System



SKYLIGHT

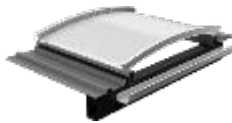
Controlite System for Roof



Danpal Roofing System



Danpavault System

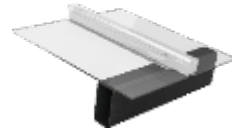


OUTDOOR

Danpal Roofing System



Danpal Compact System



SHADING

Danpal Louver System



INTERIOR SOLUTIONS

Danpal Interior System



FACADE SOLUTIONS



FACADE SOLUTIONS

Controlite system for façade

Danpatherm system

Danpal façade system

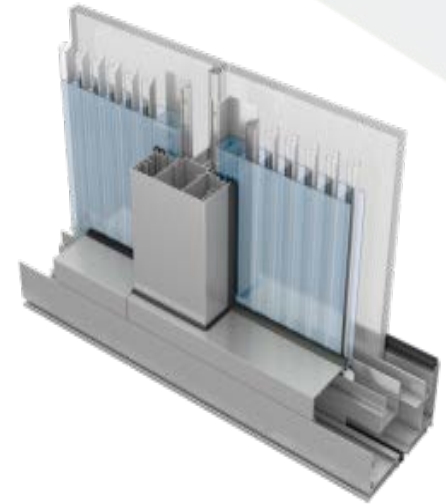


CONTROLITE SYSTEM FOR FAÇADE

INTELLIGENT DAYLIGHTING SYSTEM

Benefits

- Delivers optimal comfort in changing daylight conditions
- Energy saving, eco-friendly system
- Reduces heating/cooling costs
- Excellent insulation



DANPATHERM SYSTEM

UNITIZED LARGE-SPANNING HIGH INSULATION SYSTEM FOR FAÇADES

Benefits

- Exceptional thermal insulation
- Factory pre-assembled CASSETTE
- Quick and easy installation
- Clean look – no visible aluminum
- Unparalleled wind load resistance

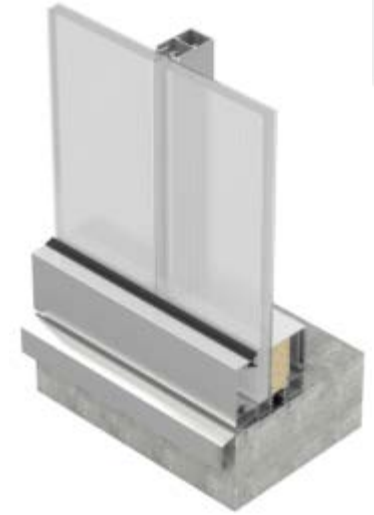


DANPAL FACADE SYSTEM

TRANSLUCENT SINGLE GLAZING FAÇADE SYSTEMS

Benefits

- High thermal insulation
- Clean look – no visible aluminium
- Variable levels of light transmission
- Unparalleled wind load resistance
- High Impact resistant



CLADDING SOLUTIONS



CLADDING SOLUTION

Danpal VRS system



VRS SYSTEM

VENTILATED RAINSCREEN SYSTEM

Benefits

- Lightweight
- 100% waterproof
- Quick, easy and cost effective installation
- Unparalleled design & choice of colors
- Significant panel lengths



SKYLIGHT SOLUTIONS



SKYLIGHT SOLUTIONS

Controlite® System for Roofing

Danpalon Roofing System

Compact

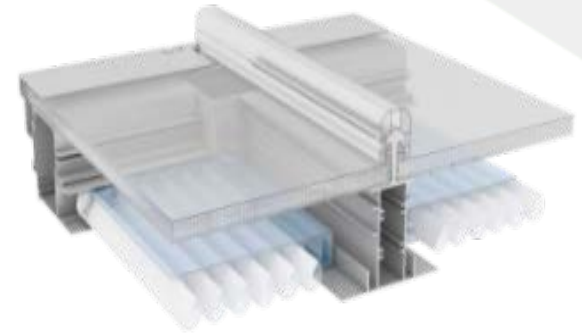


CONTROLITE SYSTEM FOR ROOFING

INTELLIGENT DAYLIGHT SYSTEM

Benefits

- Delivers optimal comfort in changing daylight conditions
- Energy saving, eco-friendly system
- Reduces heating/cooling costs
- Excellent insulation
- Diffused light



DANPAL® ROOFING SYSTEM

MODULAR GLAZING SOLUTION FOR ROOFS

Benefits

- Excellent thermal performance
- Superior air and water tightness
- High impact resistance
- Cold Bending of Sheets at Site
- Quick, easy and cost effective installation



DANPAL® COMPACT SYSTEM

TOTAL TRANSPARENCY AND IMPACT RESISTANCE

Benefits

- Pure transparency
- Light weight
- Water proof
- Easy installation
- Impact resistance



OUTDOOR SOLUTION



OUTDOOR SOLUTIONS

Danpalon Roofing System

Danpal Compact System

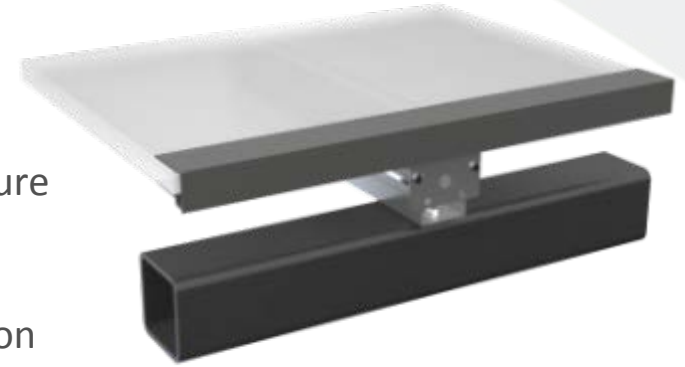


DANPAL ROOFING SYSTEM

MODULAR GLAZING SOLUTION FOR ROOFS

Benefits

- 100% water proof
- Lightweight
- Unique microcells glazing panels structure
- High impact resistance
- Cold bending of sheets at site
- Quick, easy and cost effective installation



DANPAL COMPACT SYSTEM

MODULAR GLAZING SOLUTION FOR ROOFS

Benefits

- 100% water proof
- Lightweight
- Unique microcells glazing panels structure
- Superior air and water tightness
- High impact resistance
- Cold Bending of Sheets at Site
- Quick, easy and cost effective installation



SHADING SOLUTION



SHADING SOLUTION

Danpal Louver system

Danpal Interior system



DANPAL® LOUVER SYSTEM

MODULAR GLAZING SOLUTION FOR SHADING

Benefits

- 100% water Proof
- Lightweight
- Unique microcells glazing panels structure
- Superior air and water tightness
- High impact resistance
- Cold Bending of Sheets at Site
- Quick, easy and cost effective installation



DANPAL® INTERIOR SYSTEM

**INNOVATIVE SOLUTIONS
FOR INTERIORS WITH
A UNIQUE RANGE OF
DISTINCTIVE VISUAL
APPEARANCES**

Benefits

- Wide range of colors
- Unlimited design flexibility
- Lightweight
- Easy to install
- Allows for both open and intimate spaces



DANPALON GLAZING MATERIAL

GLAZING MATERIAL

Danpalon Panel

Danpalon 3DLITE



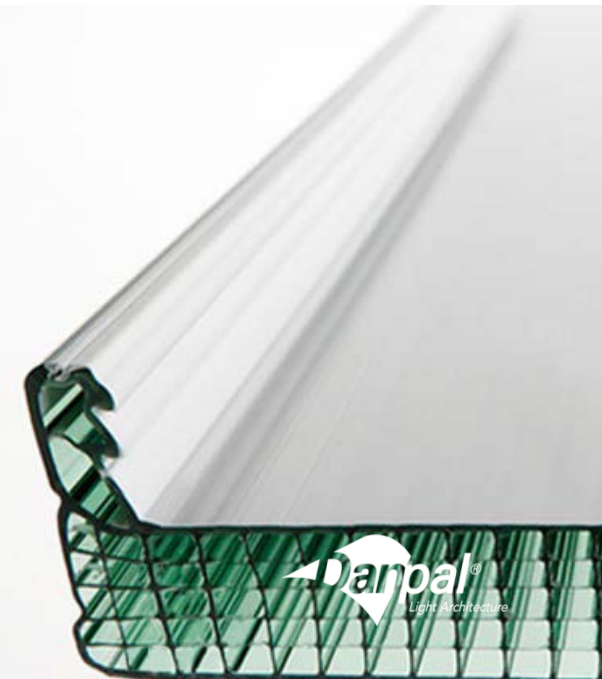
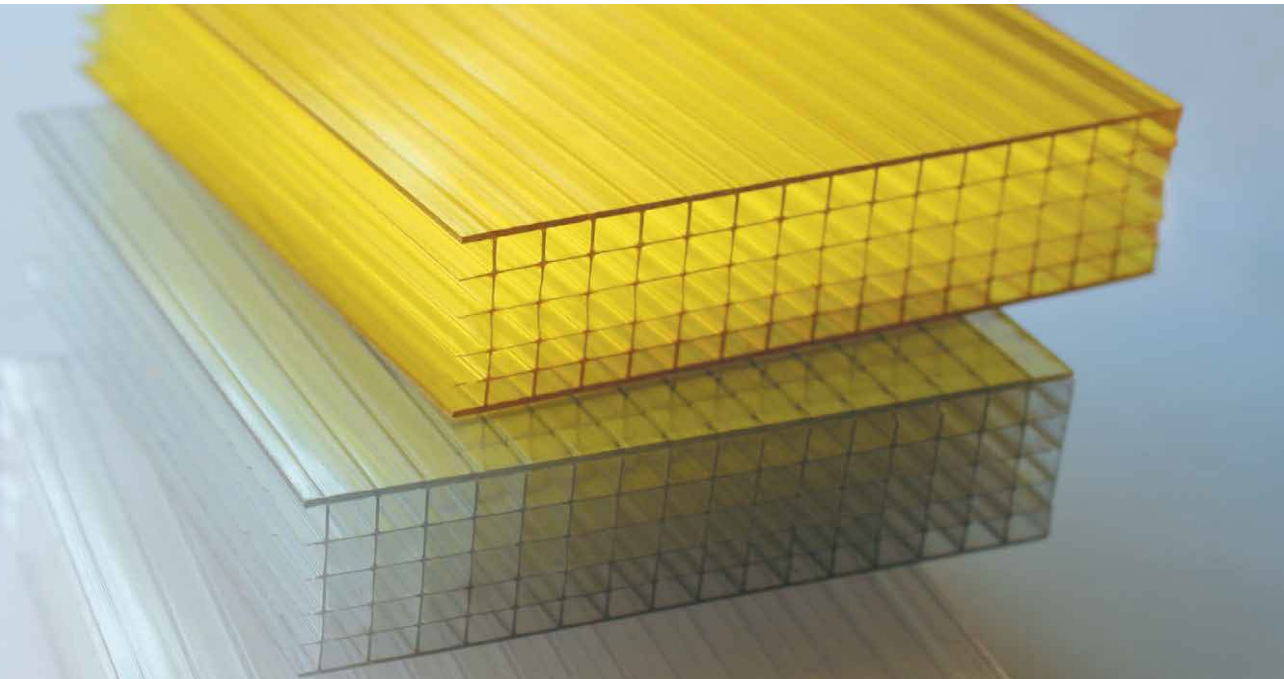
DANPALON® PANEL

DANPALON GLAZING MATERIAL

Light diffuse,
thermal insulation
and UV protection

Benefits

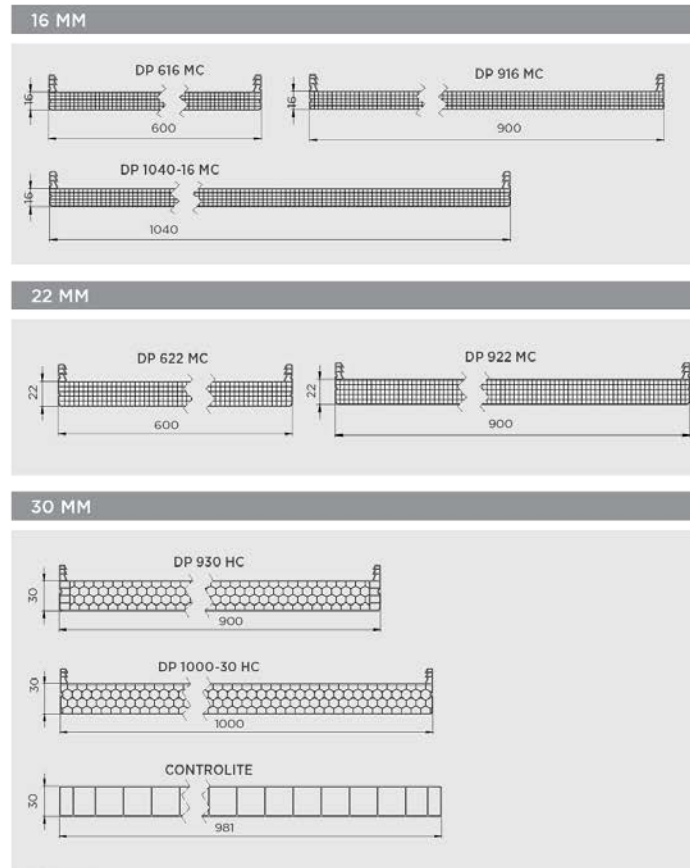
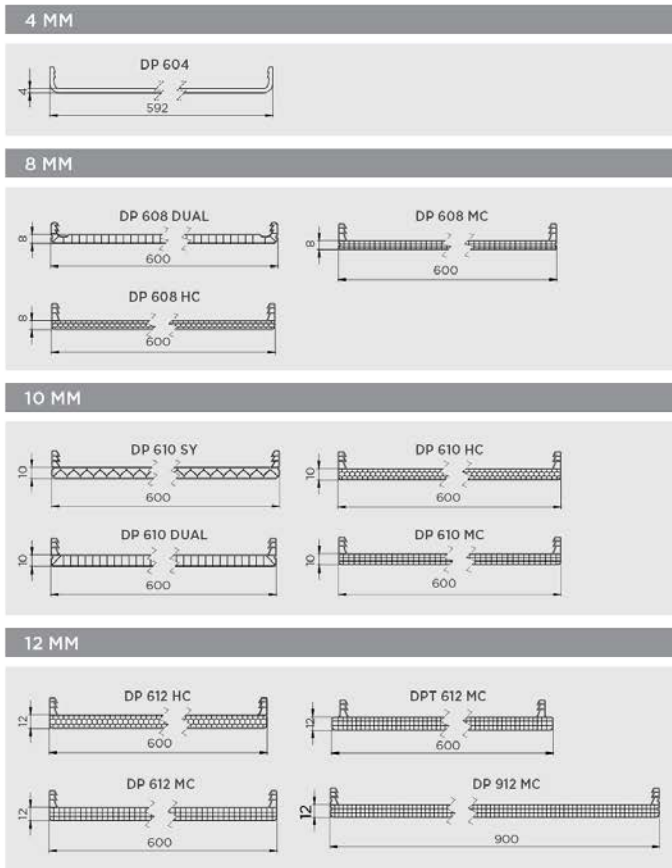
- Unparalleled impact resistance
- High thermal performance
- High ratio of Weight and strength
- Unequaled aesthetic design
- Environmental friendly product



TYPES OF DANPALON SHEETS

Panels structure – honeycomb/multicell

- Standard length: 11.98 meters
- Special lengths can be manufactured upon request



DANPALON[®] OPTICAL & THERMAL PROPERTIES

		4mm Compact	8mm Multicell Honeycomb	10mm Multicell Honeycomb	12mm Multicell Honeycomb	16mm Multicell	22mm Multicell	30mm Honeycomb
Technical Data	K Factor – Quantity of heat transmitted in 1 ft ²	5.36	2.46	2.11	1.84	1.53	1.50	1.40
	Minimum Curvature Radius	2.90	2.00	2.50	2.60	2.90	3.50	4.20
Reflective Grey	LT % - VISIBLE LIGHT Transmittance	% 20	% 20	% 20	% 20	% 20	% 20	% 20
	ST % - Solar RADIATION Transmittance	% 18	% 18	% 18	% 18	% 17	% 17	% 17
	SR % - Solar Reflection	% 33	% 33	% 33	% 33	% 29	% 29	% 27
	SHGC – Solar Heat Gain Coefficient	0.28	0.28	0.28	0.28	0.28	0.28	0.28
Colorless	LT % - VISIBLE LIGHT Transmittance	% 89	% 71	% 71	% 71	% 63	% 63	% 68
	ST % - Solar RADIATION Transmittance	% 80	% 60	% 60	% 60	% 51	% 51	% 58
	SR % - Solar Reflection	% 17	% 36	% 36	% 36	% 40	% 40	% 34
	SHGC – Solar Heat Gain Coefficient	0.81	0.67	0.67	0.67	0.53	0.53	0.60

- Weight by square meter
- Minimum curvature radius
- Light and heat transmittance
- Solar reflection, according to the thickness and the color of the sheet

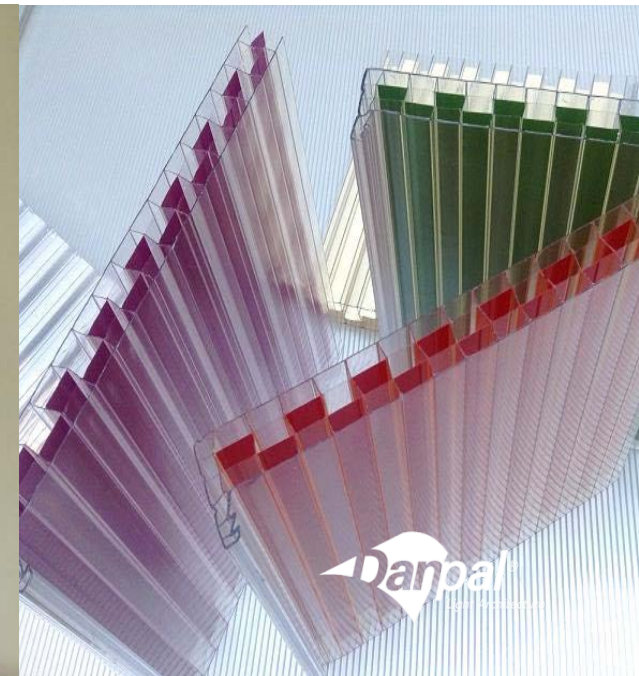
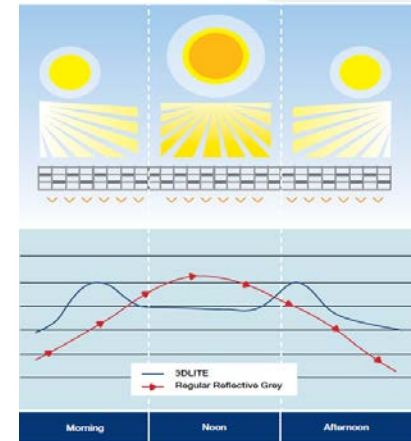
Note: It must be taken into account that, although DANPALON has a higher thermal insulation, it is always recommended to have natural or artificial ventilation.

DANPALON® 3DLITE

DANPALON 3DLITE

Benefits

- Dynamic look
- Flexible solution for summer and winter
- Optimises daylight throughout the day
- Wide variety of colours
- Part of the Danpalon® System



FINISHING

FINISHING

Softlight

HP

Pearl Low E



DANPALON SOFTLITE

LIGHT DIFFUSION - SOFTLITE

The Danpalon Softlite is a treatment which eliminates the phenomenon known as neon effect (light reflection on the sheet), resulting in a better light diffusion, much appreciated by architects and designers.

with softlite



without softlite



DANPALON HP

DANPALON HIGH PROTECTION (HP)

This panel has a special coating, achieving

- Chemical resistance against solvents (anti-graffiti)
- Better resistance against scratching
- Higher rigidity of the panel
- Prevents dirt accumulation, self-cleaning

Thanks to these advantages you can now consider installing the Danpalon System in places with high transit of persons, without fearing damage.



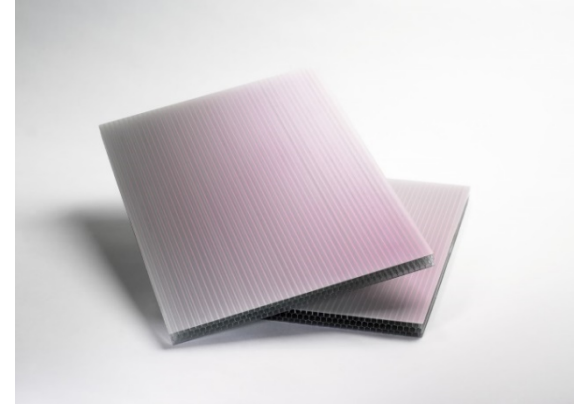
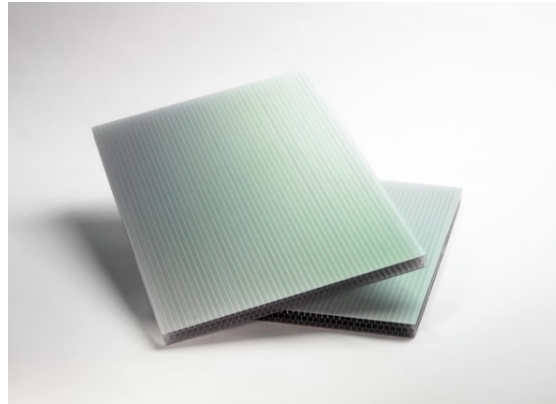
PEARL LOW E

IRIDESCENT ASPECT

Infrared treatment is a co-extruded finish that can be applied in all panels.

It can significantly limit solar heat gain without affecting light transmission levels.

It works by selectively blocking solar radiation that is part of the non visible range. This leads to a reduction in solar loads, enabling significant reductions in air conditioning costs and carbon emissions.



COLOR RANGE

danpal.com/architects-inspiration/color



THANK YOU

Sign Your Signature With Light

www.danpal.com

